



## WESTMINSTER

The Westminster floor plan features a nice flow. The master bedroom suite is on the second floor with his and her walk-in closets and an additional sitting area. This home includes a three car side entry garage. ❖ Together with our extensive list of standard amenities, this floor plan can be customized to fit your needs and will result in a home that gives you a sense of pride in ownership. Seitz Custom Homes builds neighborhoods that exude distinct character and charm providing a beautiful setting for your family

## SALES ASSOCIATES

**Heidi Seitz**

*Direct: 610-972-2175*

---

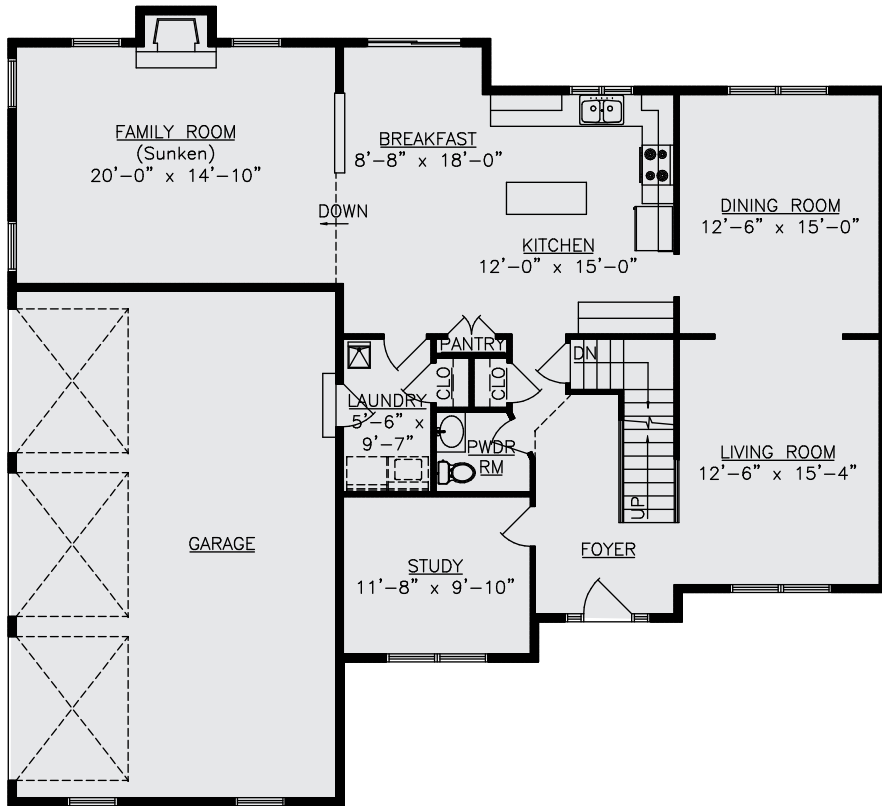
**Anne Goldstein**

*Direct: 610-704-9909*

---

*Email: [seitzcustomhomes@rcn.com](mailto:seitzcustomhomes@rcn.com)*

*Sales Center: 610-258-8800*



FIRST FLOOR PLAN

1st FLOOR LIVING AREA = 1517 SQ.FT.  
 2nd FLOOR LIVING AREA = 1662 SQ.FT.

OPEN AREA 2nd FLOOR = 95 SQ.FT.  
 GARAGE = 665 SQ.FT.



SECOND FLOOR PLAN

**WESTMINSTER**

