



## STONEBRIDGE

The Stonebridge plan contains a convenient second staircase from the kitchen directly to the upstairs. The second floor hallway overlooks the two story family room creating a bridge. The master bedroom is exceptionally large and wraps around to the master bath area. ❖ Together with our extensive list of standard amenities, this floor plan can be customized to fit your needs and will result in a home that gives you a sense of pride in ownership. Seitz Custom Homes builds neighborhoods that exude distinct character and charm providing a beautiful setting for your family.

## SALES ASSOCIATES

**Heidi Seitz**

*Direct: 610-972-2175*

---

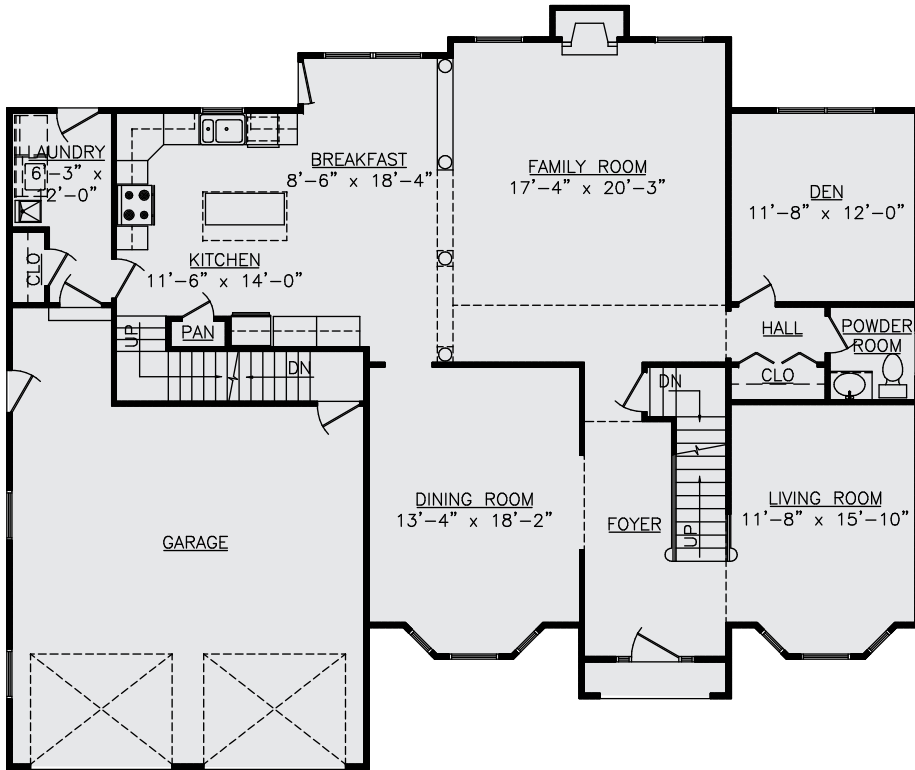
**Anne Goldstein**

*Direct: 610-704-9909*

---

*Email: [seitzcustomhomes@rcn.com](mailto:seitzcustomhomes@rcn.com)*

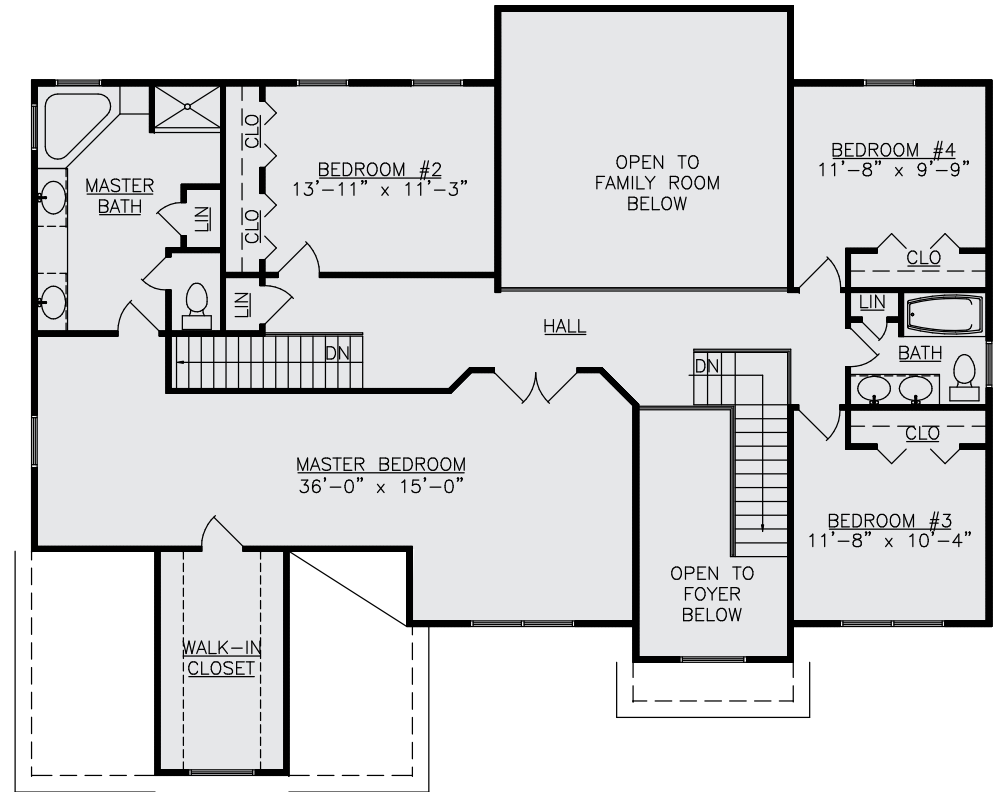
*Sales Center: 610-258-8800*



FIRST FLOOR PLAN

1st FLOOR LIVING AREA = 1716 SQ.FT.  
 2nd FLOOR LIVING AREA = 1629 SQ.FT.  
 TOTAL LIVING AREA = 3345 SQ.FT.

OPEN AREA 2nd FLOOR = 393 SQ.FT.  
 GARAGE = 568 SQ.FT.



SECOND FLOOR PLAN

STONEBRIDGE

