



## KINGSBURY II

The Kingsbury II plan is a larger version of our signature Model Home with a three car side entry garage and a convenient staircase from the garage to the basement. The master bedroom suite has a welcoming sitting room as well as an additional dressing area. ❖ Together with our extensive list of standard amenities, this floor plan can be customized to fit your needs and will result in a home that gives you a sense of pride in ownership. Seitz Custom Homes builds neighborhoods that exude distinct character and charm providing a beautiful setting for your family.

### SALES ASSOCIATES

**Heidi Seitz**

*Direct: 610-972-2175*

---

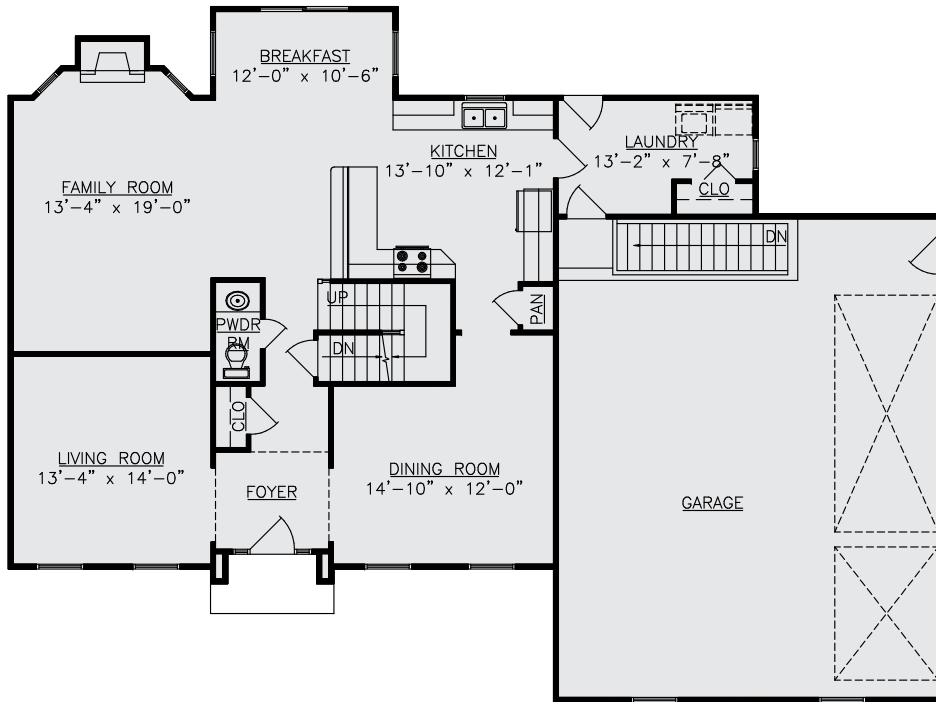
**Anne Goldstein**

*Direct: 610-704-9909*

---

*Email: [seitzcustomhomes@rcn.com](mailto:seitzcustomhomes@rcn.com)*

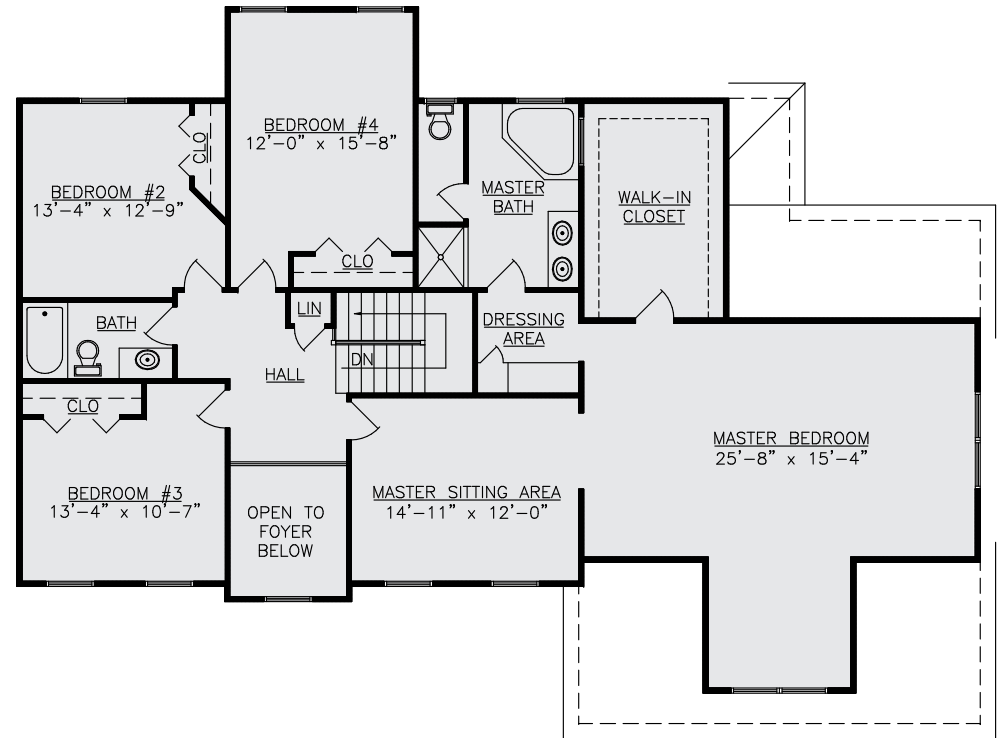
*Sales Center: 610-258-8800*



FIRST FLOOR PLAN

1st FLOOR LIVING AREA = 1388 SQ.FT.  
 2nd FLOOR LIVING AREA = 1843 SQ.FT.  
 TOTAL LIVING AREA = 3231 SQ.FT.

OPEN AREA 2nd FLOOR = 66 SQ.FT.  
 GARAGE = 864 SQ.FT.



SECOND FLOOR PLAN

# KINGSBURY II

